

# Hay Barn at Floyd Lamb Park



# Hay Barn at Floyd Lamb Park





# Hay Barn at Floyd Lamb Park

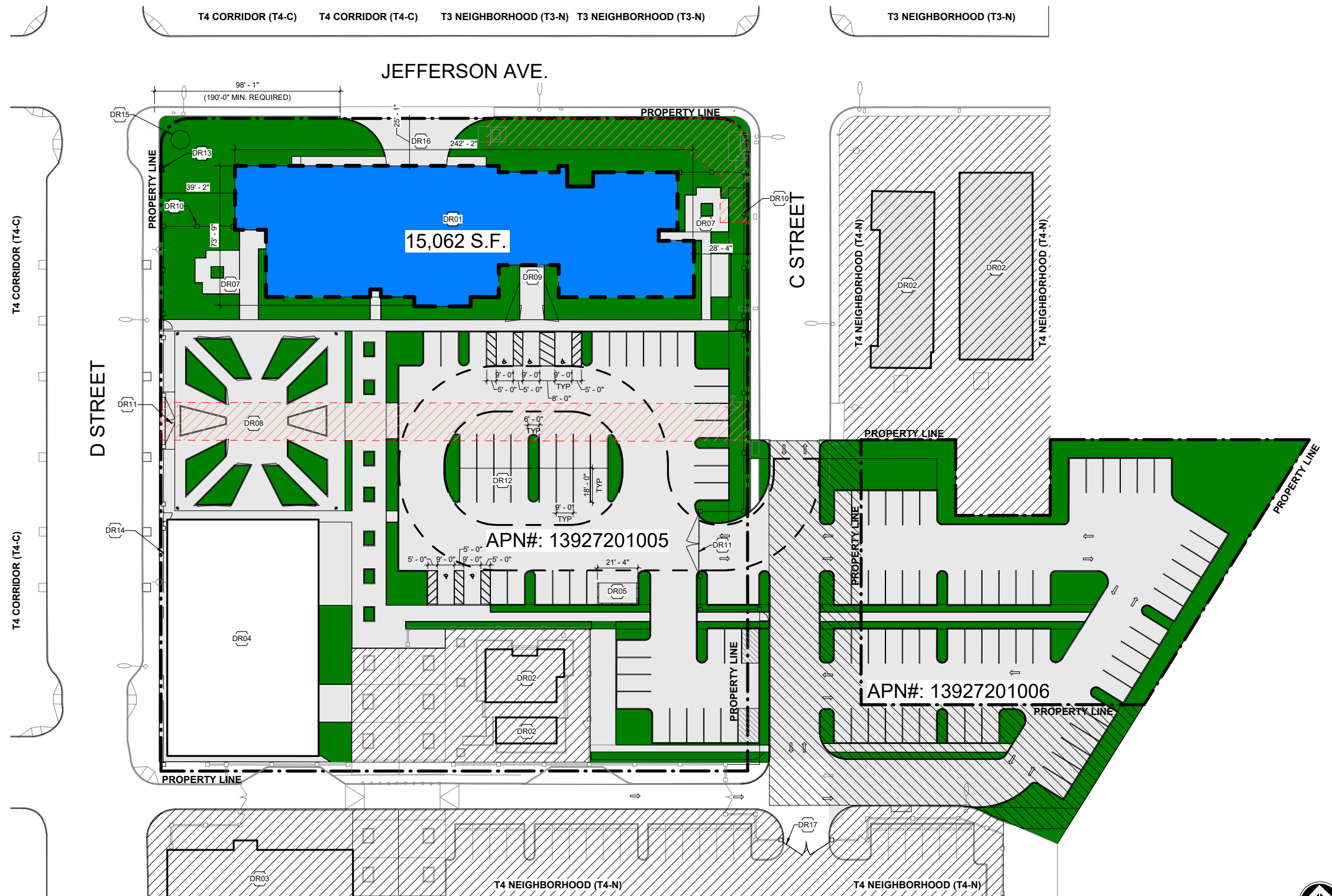


# WESTSIDE EDUCATION AND TRAINING CENTER

Historic Preservation Commission – September 28, 2022



# SITE PLAN



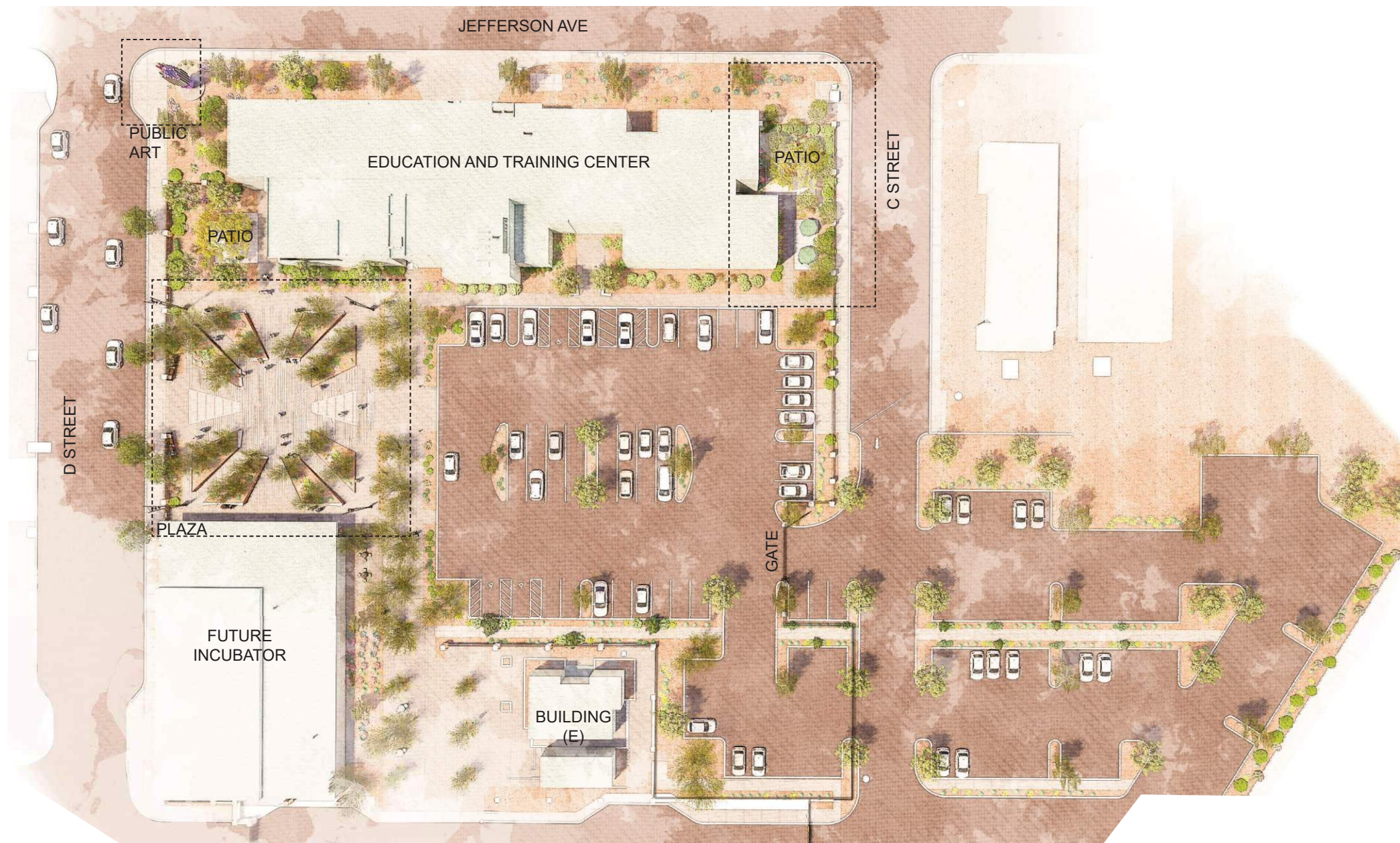
Project seeks to provide education and training center at parcel north of the Historic Westside School at the corner of D Street and Jefferson Avenue

The approximately 15,000sf facility will house a healthcare laboratory, classrooms, computer lab, and offices as well as vocational classrooms for manufacturing, construction, and welding. The site layout includes parking for the project, pad for a future incubator space, outdoor plaza, and pedestrian connection to the Historic Westside School.

The project connects to the recently modernized Historic Westside School creating a pedestrian, tree-lined corridor while contextual forms and materials create a campus-feel between the projects.



# LANDSCAPE PLAN



Project seeks to provide education and training center at parcel north of the Historic Westside School at the corner of D Street and Jefferson Avenue

The approximately 15,000sf facility will house a healthcare laboratory, classrooms, computer lab, and offices as well as vocational classrooms for manufacturing, construction, and welding. The site layout includes parking for the project, pad for a future incubator space, outdoor plaza, and pedestrian connection to the Historic Westside School.

The project connects to the recently modernized Historic Westside School creating a pedestrian, tree-lined corridor while contextual forms and materials create a campus-feel between the projects.



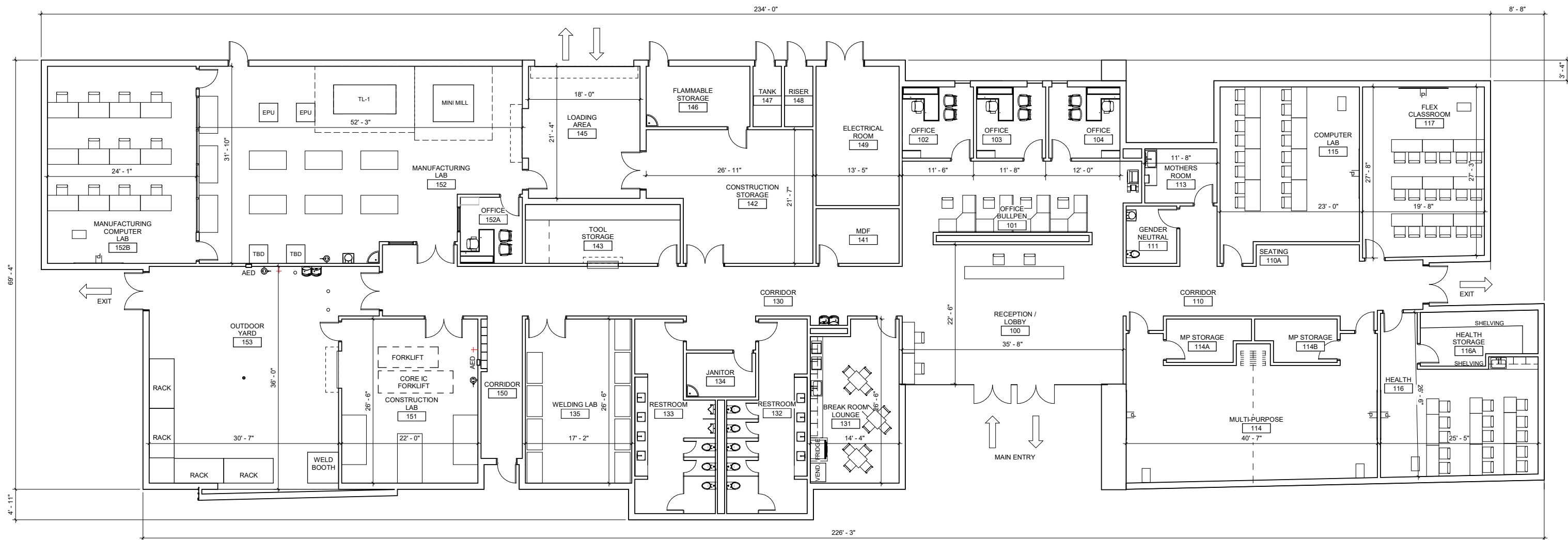
# LANDSCAPE PLAN



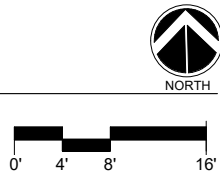


# FLOOR PLAN

Project is organized to quiet, healthcare focused side to the east and noisy, manufacturing focused side to the west. At the core is administration and central building functions



FLOOR PLAN LEVEL 1  
SCALE: 1/8" = 1'-0"





# EXISTING CONTEXT

## Historic Westside School





# PRECEDENT



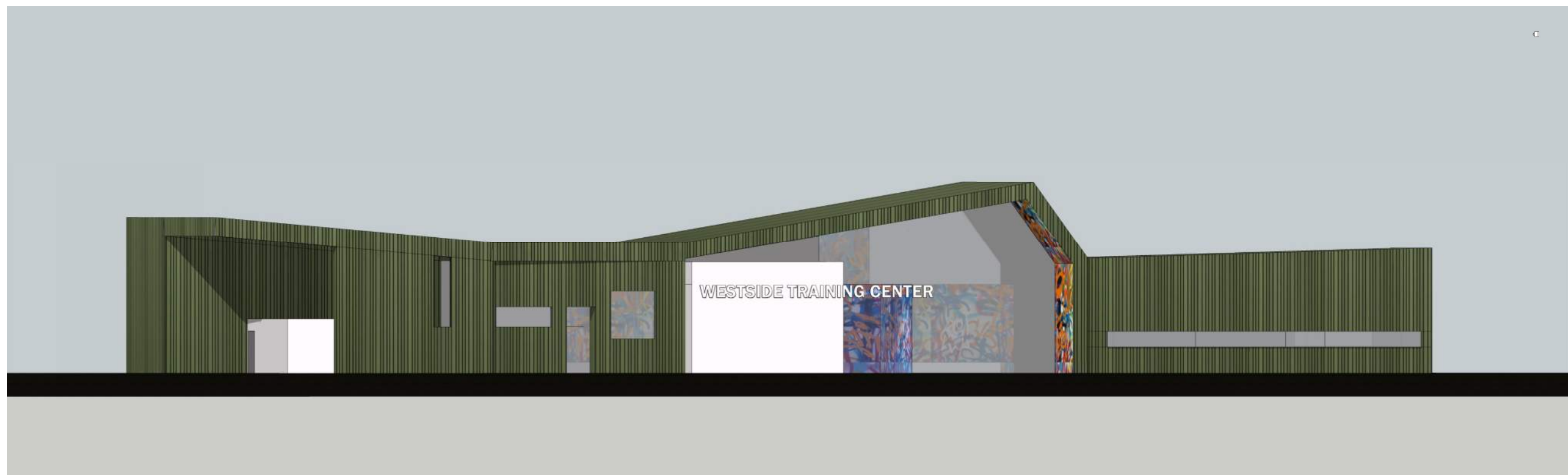


# PRECEDENT





# PRELIMINARY MASSING



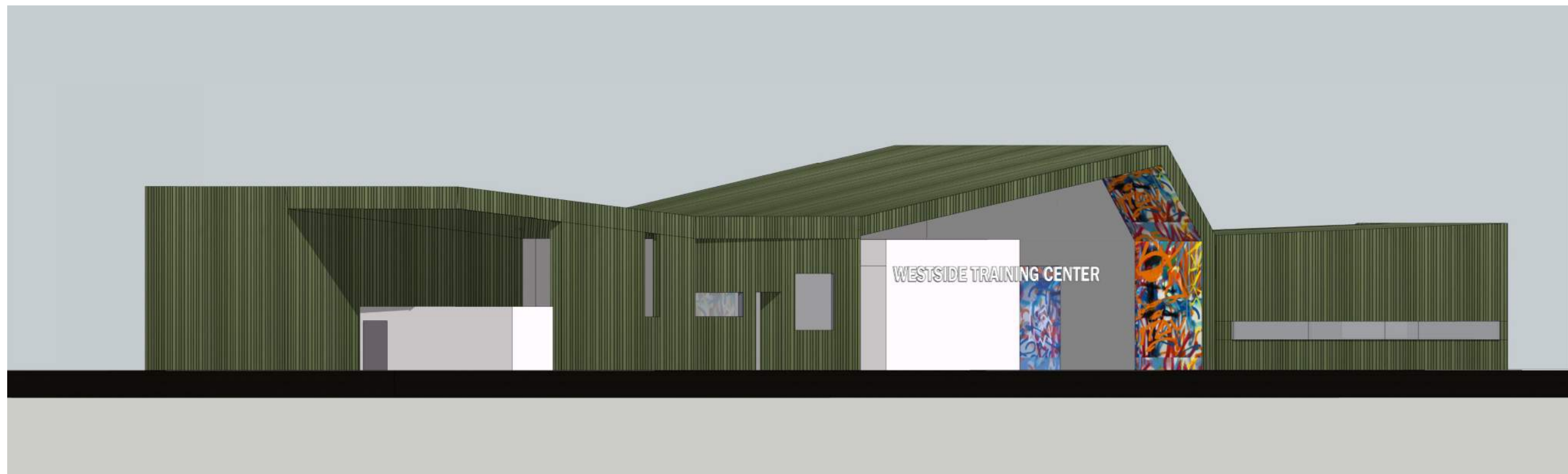
The project's varied pitched form reflects the forms of the Historic Westside School and neighborhood while contemporizing them into a modern development.

Embodying the character of the Westside community is critical to the project which creates moments to communicate the identity including a mural at the building entry which could be by a local artist and help brand the building as Westside.

The material palette incorporates color and tones from the Historic Westside School, particularly the mint green of the exterior metal panels that, with alternating profiles, create a play of light and shadow along the building's surfaces.



# PRELIMINARY MASSING



The project's varied pitched form reflects the forms of the Historic Westside School and neighborhood while contemporizing them into a modern development.

Embodying the character of the Westside community is critical to the project which creates moments to communicate the identity including a mural at the building entry which could be by a local artist and help brand the building as Westside.

The material palette incorporates color and tones from the Historic Westside School, particularly the mint green of the exterior metal panels that, with alternating profiles, create a play of light and shadow along the building's surfaces.



# PRELIMINARY MASSING





**THANK YOU!**